



---

---

---

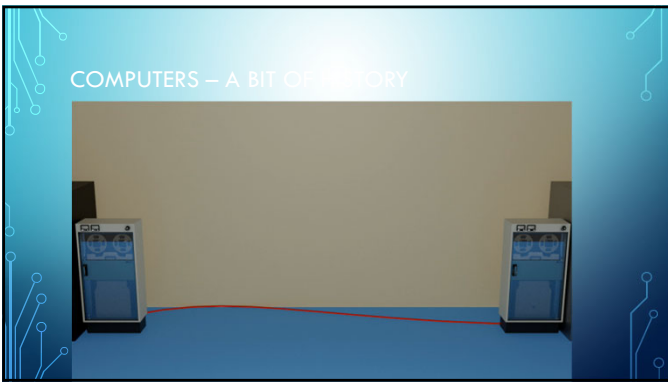
---

---

---

---

---



---

---

---

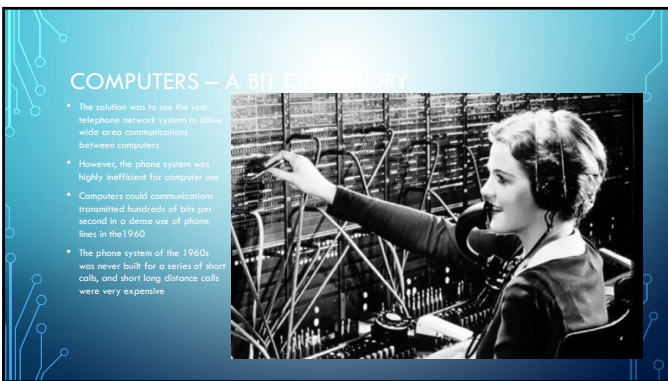
---

---

---

---

---



---

---

---

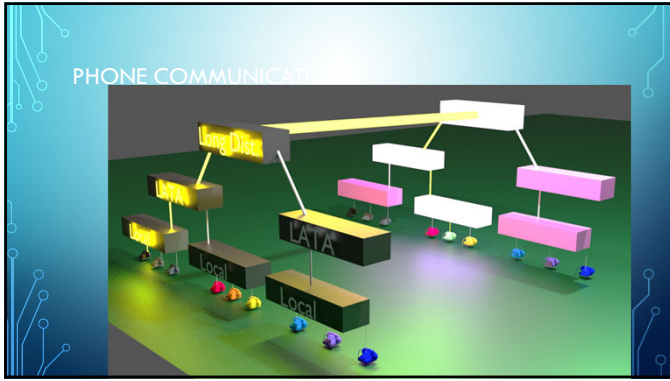
---

---

---

---

---



---

---

---

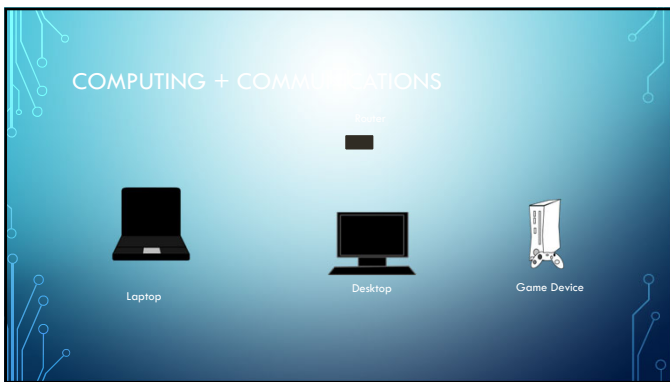
---

---

---

---

---



---

---

---

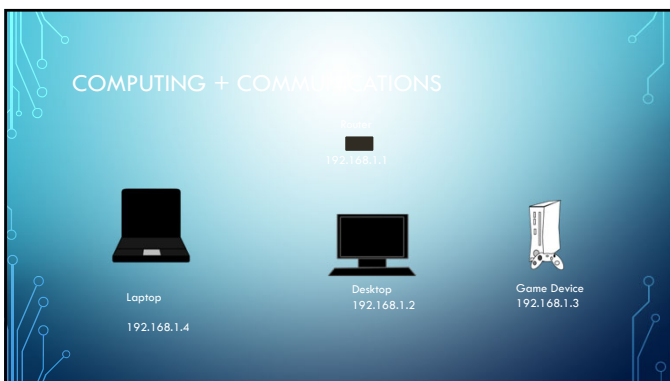
---

---

---

---

---



---

---

---

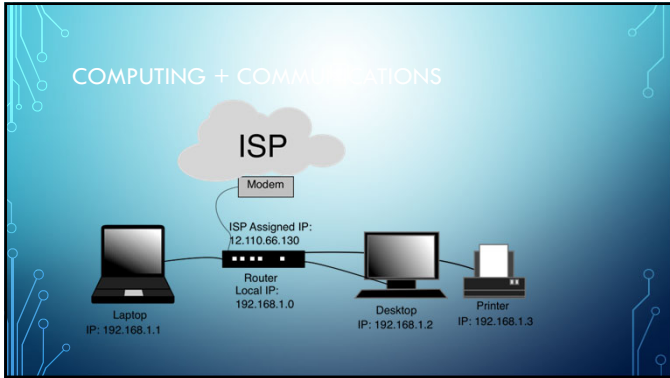
---

---

---

---

---



---

---

---

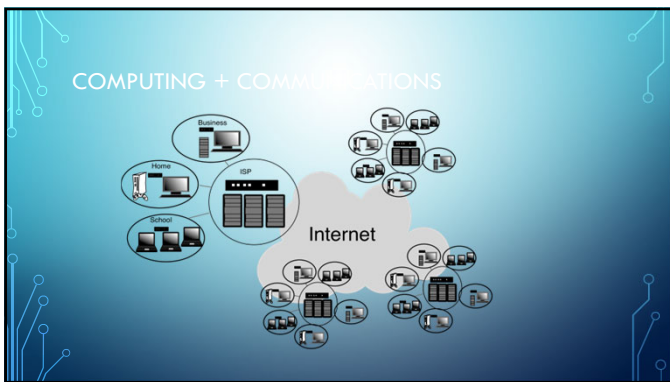
---

---

---

---

---



---

---

---

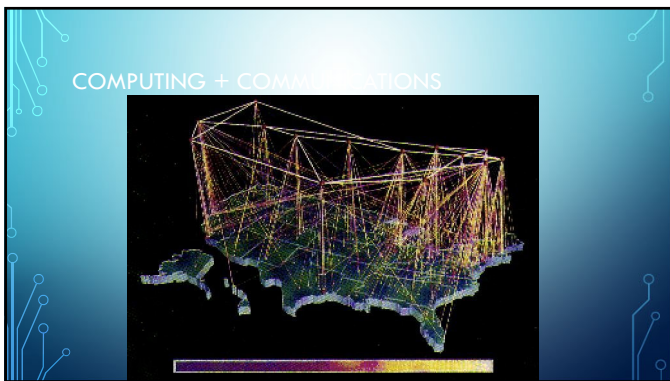
---

---

---

---

---



---

---

---

---

---

---

---

---



---

---

---

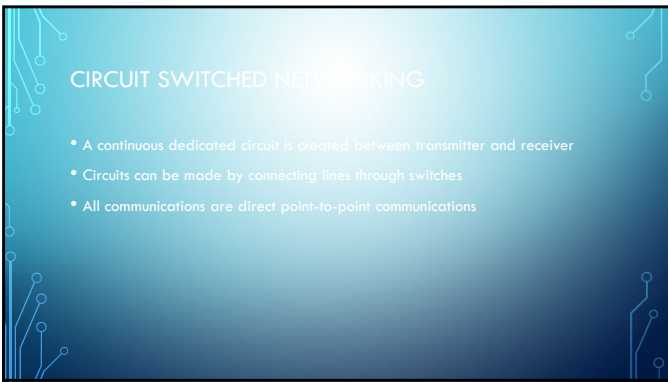
---

---

---

---

---



---

---

---

---

---

---

---

---



---

---

---

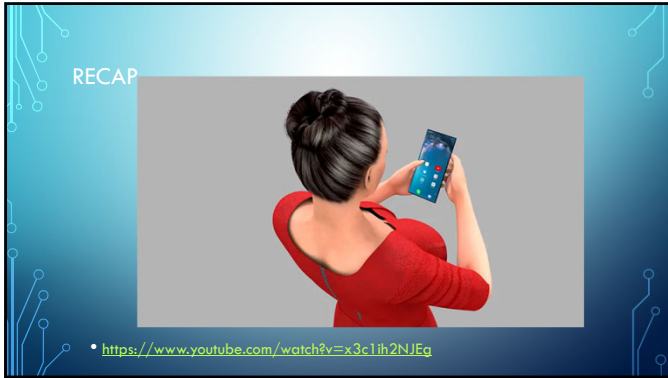
---

---

---

---

---



---

---

---

---

---

---

---

---



---

---

---

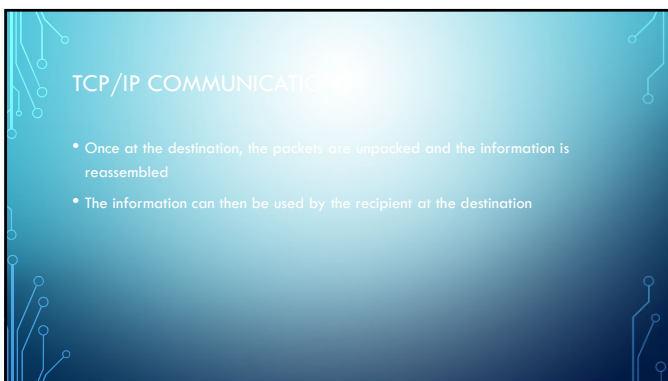
---

---

---

---

---



---

---

---

---

---

---

---

---

### TCP/IP COMMUNICATIONS

- Because packets travel from origin to destination using opportunistic routing, the overall network is deemed to be "self healing"
  - This means that if a route is lost or inoperative, the packet will be rerouted to reach its destination
  - The route is independent of geography

---

---

---

---


---

---

---

---

### INTERNET AND GAMBLING



<http://www.cc.com/video-clips/us1ore/the-daily-show-with-jon-stewart-headlines---internet>

---

---

---

---

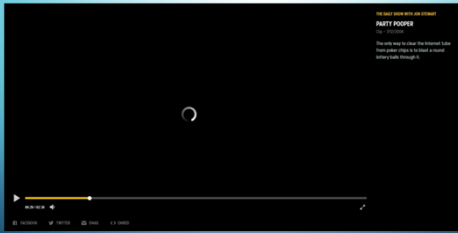
---

---

---

---

### INTERNET AND GAMBLING



<http://www.cc.com/video-clips/sokn51/the-daily-show-with-jon-stewart-party-pooper>

---

---

---

---

---

---

---

---

LAW AND TECHNOLOGY

- Technology is moving at a rapid pace often without regard for the impact of the technology on existing laws and regulations
- Internet technologies are inherently not contained by geography
- Government jurisdiction and laws are inherently limited by geography
- Containing internet traffic by government order is difficult

---

---

---

---

---

---

---

---

LAW AND TECHNOLOGY



---

---

---

---

---

---

---

---

LAW AND TECHNOLOGY

- So what is a gambling device?

---

---

---

---

---

---

---

---

LAW AND TECHNOLOGY

- How would you have defined a gambling device in 1930?

---

---

---

---

---

---

---

---

LAW AND TECHNOLOGY

- How would you have defined a gambling device in 1980?

---

---

---

---

---

---

---

---

LAW AND TECHNOLOGY

- How would you define a gambling device today?

---

---

---

---

---

---

---

---



LAW AND TECHNOLOGY

- How would you define a gambling device today?

---

---

---

---

---

---

---

---

---

---

LAW AND TECHNOLOGY

- NRS 463.0155 "Gaming device" defined. "Gaming device" means any object used remotely or directly in connection with gaming or any game which affects the result of a wager by determining win or loss and which does not otherwise constitute associated equipment. The term includes, without limitation:
  1. A slot machine.
  2. A dice machine.
  3. Any electronic device or device of any kind which is used to determine the result of a game, including, without limitation:
    - (a) An assembled electronic device which is used to determine the result of a game in a slot machine.
    - (b) A device with electrical wiring and components for receiving a signal, which is used to receive and process data resulting in a display of coins, tokens or anything of value.
    - (c) An assembled mechanical or electromechanical device used to determine the result of a game in a slot machine.
    - (d) Any object which may be connected to or used with a slot machine to determine the result of a game, including, without limitation, a device which affects the outcome of a game.
  4. A system for the accounting or management of any game in which the result of the wager is determined electronically by using any combination of hardware or software for computers.
  5. A control program.
  6. Any combination of one of the components set forth in paragraphs (a) to (d), inclusive, of subsection 1 and any other component which the Commission determines by regulation to be a machine used directly or indirectly in connection with gaming or any game which affects the result of a wager by determining win or loss.
  7. Any object that has been determined to be a gaming device pursuant to regulations adopted by the Commission.
  8. "Control program" means any software, source language or executable code which affects the result of a wager by determining win or loss as determined pursuant to regulations adopted by the Commission.
  9. "Slot machine" means the cabinet or housing of a gambling game through communication devices operated solely as an establishment which holds a nonrestricted gaming license and which operates at least 100 slot machines and at least one table game by the use of communication technology that allows a person to transmit information to a computer to assist in the playing of a slot or table game and to receive information from the display of the game, game outcomes or other similar information. For the purposes of this paragraph, "communication technology" means any method used and the components employed by an establishment to facilitate the transmission of information, including, without limitation, transmission and reception by systems based on a network, wireless fidelity, voice, cable, radio, microwave, light, optical or computer data networks. The term does not include the Internet.

---

---

---

---

---

---

---

---

---

---

LAW AND TECHNOLOGY

- NRS 463.0155 "Gaming device" defined. "Gaming device" means any object used remotely or directly in connection with gaming or any game which affects the result of a wager by determining win or loss and which does not otherwise constitute associated equipment. The term includes, without limitation:
  1. A slot machine

---

---

---

---

---

---

---

---

---

---

### LAW AND TECHNOLOGY

- NRS 463.0191 "Slot machine" defined. "Slot machine" means any mechanical, electrical or other device, contrivance or machine which, upon insertion of a coin, token or similar object, or upon payment of any consideration, is available to play or operate, the play or operation of which, whether by reason of the skill of the operator in playing a gambling game which is presented for play by the machine or application of the element of chance, or both, may deliver or entitle the person playing or operating the machine to receive cash, premiums, merchandise, tokens or any thing of value, whether the payoff is made automatically from the machine or in any other manner.

---

---

---

---

---

---

---

---

---

---

### LAW AND TECHNOLOGY

- NRS 463.0191 "Slot machine" defined. "Slot machine" means any mechanical, electrical or other device, contrivance or machine which, upon insertion of a coin, token or similar object, or upon payment of any consideration, is available to play or operate, the play or operation of which, whether by reason of the skill of the operator in playing a gambling game which is presented for play by the machine or application of the element of chance, or both, may deliver or entitle the person playing or operating the machine to receive cash, premiums, merchandise, tokens or any thing of value, whether the payoff is made automatically from the machine or in any other manner.




---

---

---

---

---

---

---

---

---

---

### MY CONTESTS

Currently Winning: **\$3.60**

MY CONTESTS

LIVE UPCOMING HISTORY

Group By	Contest	Linkup	Spot	Entry Fee	OPPONENT STATUS	Opp PPTS	Opp Runs	Prize Pool	Top Pick	
1	NHL - St. Louis (Top Pick) (Win)	USD 2	12	\$1.00	18.0	107	26.5	100	\$1	\$1.00
2	NHL - St. Louis (Top Pick) (Win)	USD 2	16	\$1	14.0	107	26.5	100	\$1	\$1.00
3	NHL - St. Louis (Top Pick) (Win) (Win)	USD 2	105	\$1.00	14.0	107	26.5	101	\$1	\$1.00
4	NHL - St. Louis (Top Pick) (Win) (Win)	USD 2	50	\$1	14.0	107	26.5	102	\$2	\$2.00
5	NHL - St. Louis (Top Pick) (Win) (Win)	USD 2	675	\$1	14.0	107	26.5	101	\$1	\$1.00

- NRS 463.0191 "Slot machine" defined. "Slot machine" means any mechanical, electrical or other device, contrivance or machine which, upon insertion of a coin, token or similar object, or upon payment of any consideration, is available to play or operate, the play or operation of which, whether by reason of the skill of the operator in playing a gambling game which is presented for play by the machine or application of the element of chance, or both, may deliver or entitle the person playing or operating the machine to receive cash, premiums, merchandise, tokens or any thing of value, whether the payoff is made automatically from the machine or in any other manner.

---

---

---

---

---

---

---

---

---

---




---

---

---

---

---

---

---

---

---

---

---

---

---

---

---

---

---

---




---

---

---

---

---

---

---

---

---

---

---

---

---

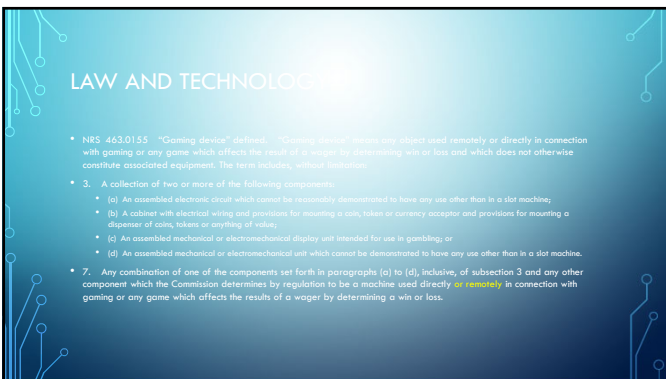
---

---

---

---

---




---

---

---

---

---

---

---

---

---

---

---

---

---

---

---

---

---

---

LAW AND TECHNOLOGY

- NRS 463.0155 "Gaming device" defined. "Gaming device" means any object used remotely or directly in connection with gaming or any game which affects the result of a wager by determining win or loss and which does not otherwise constitute associated equipment. The term includes, without limitation:
  - 4. Any object which may be connected to or used with a slot machine to alter the normal criteria of random selection or affect the outcome of a game.
  - 5. A system for the accounting or management of any game in which the result of the wager is determined electronically by using any combination of hardware or software for computers.

---

---

---

---

---

---

---

---

LAW AND TECHNOLOGY

- NRS 463.0155 "Gaming device" defined. "Gaming device" means any object used remotely or directly in connection with gaming or any game which affects the result of a wager by determining win or loss and which does not otherwise constitute associated equipment. The term includes, without limitation:
  - 6. A control program.
  - 9. As used in this section:
    - (a) "Control program" means any software, source language or executable code which affects the result of a wager by determining win or loss as determined pursuant to regulations adopted by the Commission

---

---

---

---

---

---

---

---

LAW AND TECHNOLOGY

- NRS 463.0155 "Gaming device" defined. "Gaming device" means any object used remotely or directly in connection with gaming or any game which affects the result of a wager by determining win or loss and which does not otherwise constitute associated equipment. The term includes, without limitation:
  - 8. Any object that has been determined to be a gaming device pursuant to regulations adopted by the Commission

---

---

---

---

---

---

---

---

LAW AND TECHNOLOGY

- So now how would you define a gambling device?

---

---

---

---

---

---

---

LAW AND TECHNOLOGY

---

---

---

---

---

---

---